



OPI GROUP
IKOI REFINING SYSTEMS DIVISION

G O L D

ACQUAREGIA GOLD REFINERY MOD. K

GOLD

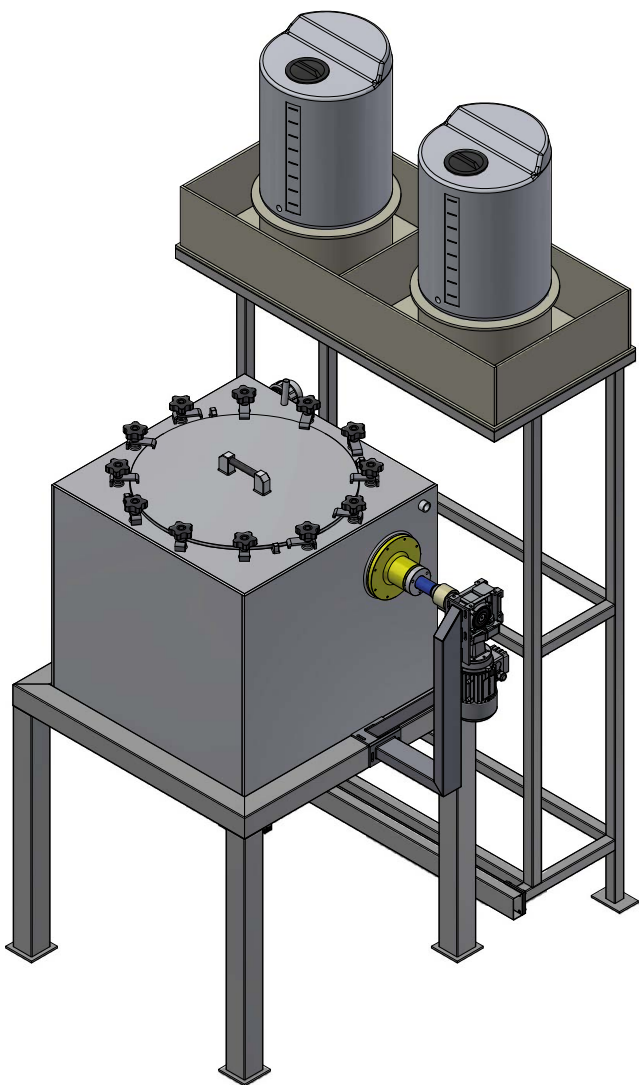
SILVER

COPPER

JEWELRY

INCINERATORS

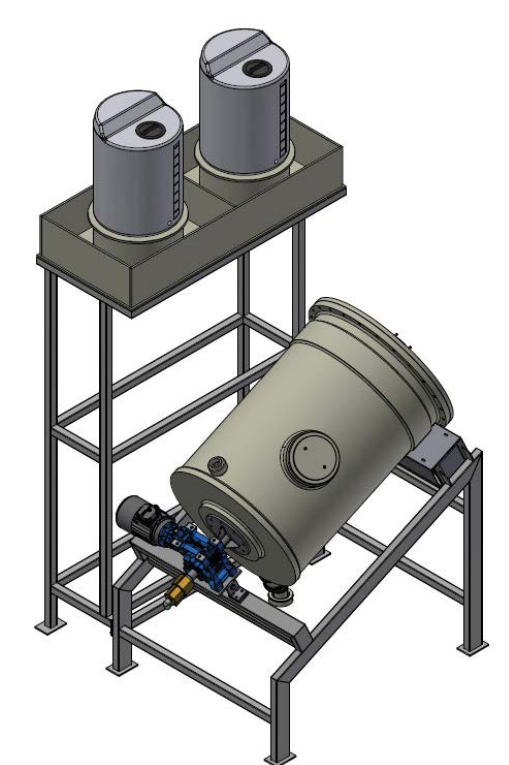
PURIFICATION



MODEL	K5	K25	K50	K100
CAPACITY Kg	5	25	50	100
POWER kW	0,55	0,55	1,5	1,5
HEATING POWER kW	6,00	6,00	6,00	12,00
OVERALL DIMENSIONS mm	2000X1000XH2000	2500x1500xH2500	2500x1500xH2500	5000x2000xH2500

The dimensions are to be considered INDICATIVE and without stairs and/or walkways.

ACQUAREGIA GOLD REFINERY MOD. RB



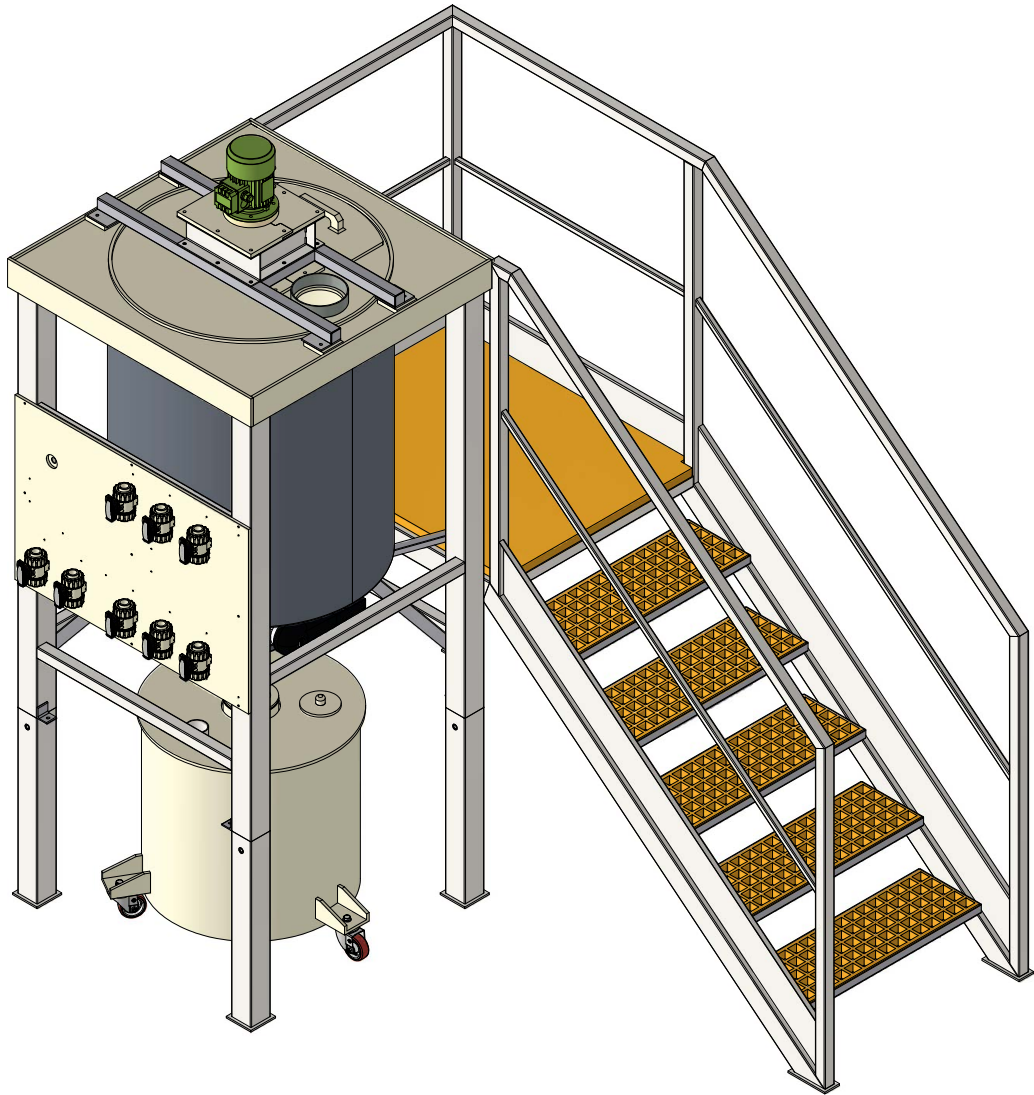
MODEL PP	RB10	RB25	RB50	RB100
CAPACITY Kg	10	25	50	100
POWER kW	0,5	0,75	0,75	1,5
OVERALL DIMENSIONS mm	1500X1000XH2500	2000X1500XH2500	2000X1800XH2500	2500X2000XH2500

The dimensions are to be considered INDICATIVE and without stairs and/or walkways.

MODEL Titanium	RB10/T	RB25/T	RB50/T	RB100/T
CAPACITY Kg	10	25	50	100
POWER kW	0,5	0,75	0,75	1,5
HEATING POWER kW	2	2	6	6
OVERALL DIMENSIONS mm	1500X1000XH2500	2500x1500xH2500	2500x1800xH2500	2500x2000xH2500

The dimensions are to be considered INDICATIVE and without stairs and/or walkways.

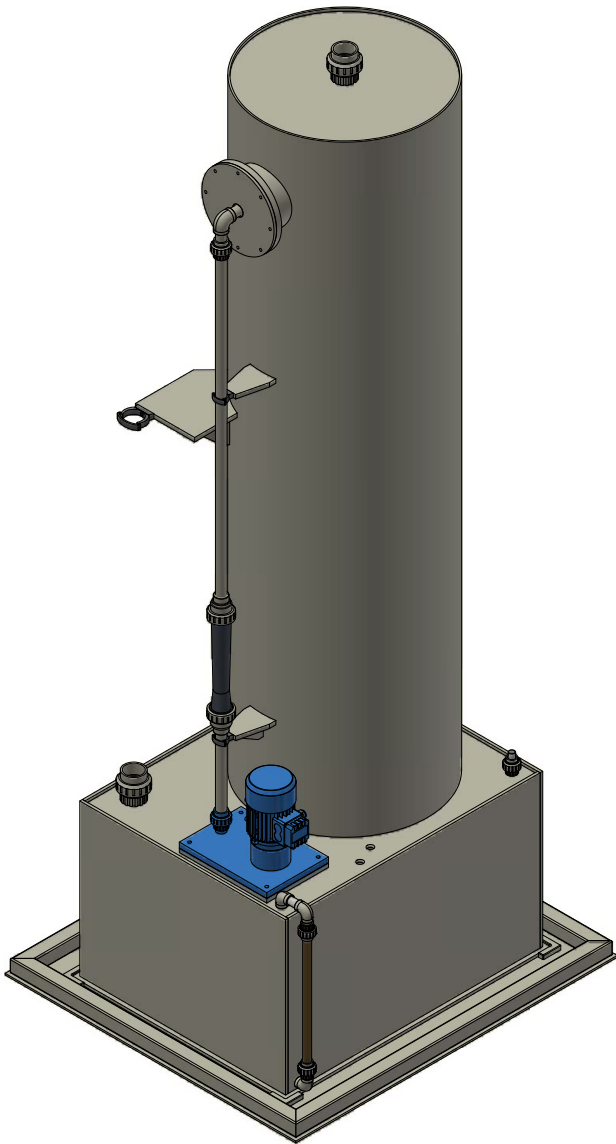
PRECIPITATOR



MODEL	PR150	PR500	PR1200
CAPACITY lt	150	500	1200
POWER kW	0,55	1,50	2,50
OVERALL DIMENSIONS mm	1000x1000xH1500	1200X1200XH2000	1500X1500XH2400

The dimensions are to be considered INDICATIVE and without stairs and/or walkways.

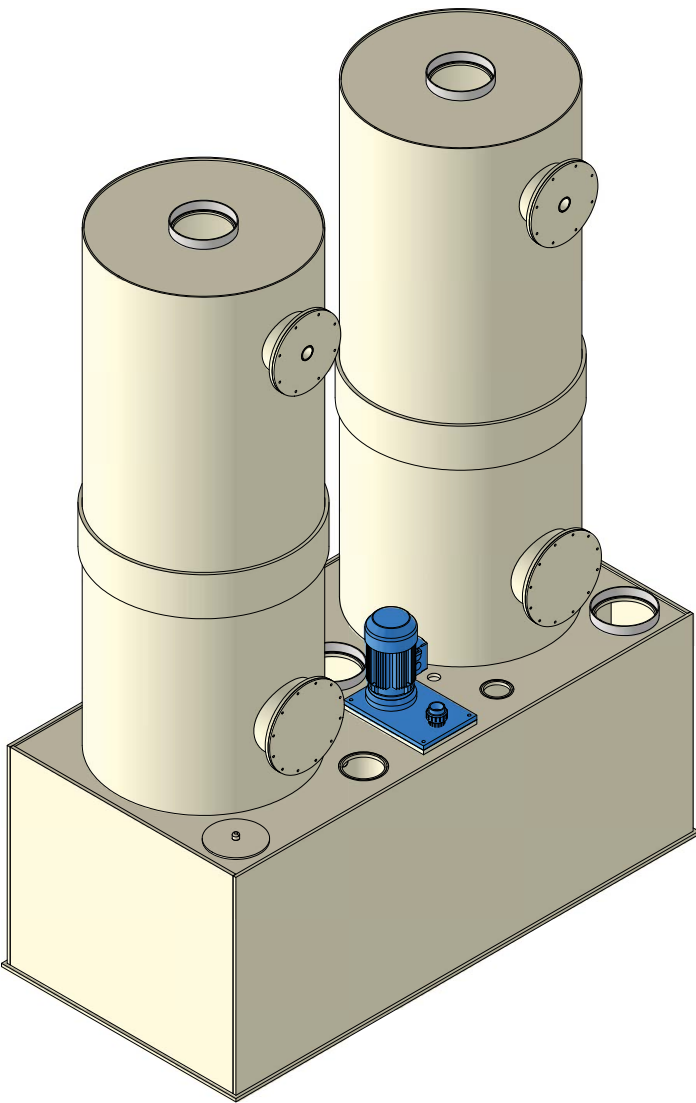
NOX SCRUBBER



MODEL	NOx600	NOx2-600
CAPACITY mc/h	450	450
POWER kW	0,55	1,50
OVERALL DIMENSIONS mm	1000x1200xH2500	2100X1200XH2500

The dimensions are to be considered INDICATIVE and without stairs and/or walkways.

BASIC SCRUBBER



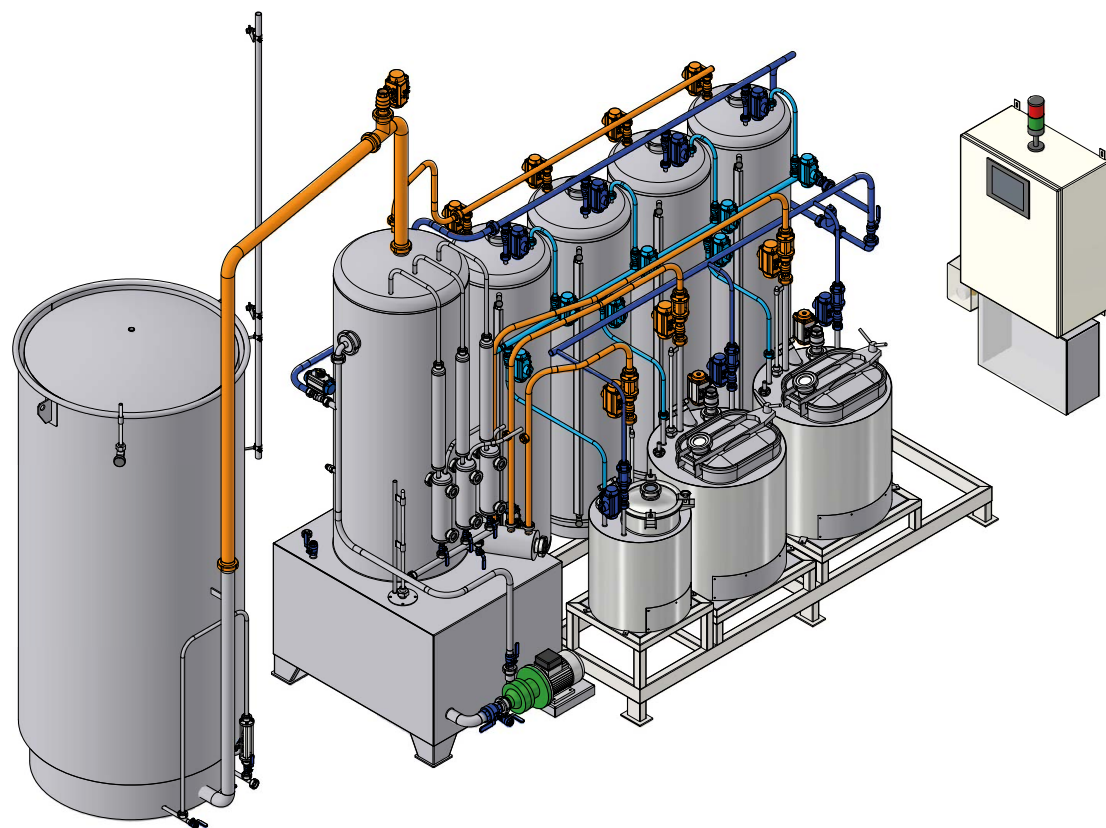
MODEL	BS600	BS2-600	BS900	BS2-900
CAPACITY mc/h	800	1500	2000	3500
POWER kW	3,00	3,50	6,50	8,50
OVERALL DIMENSIONS mm	1000x1200xH2500	2000X1200XH2500	1500X1500XH2500	2500X1500XH2500

The dimensions are to be considered INDICATIVE and without stairs and/or walkways.

INQUARTATION SYSTEM

INQUARTATION SYSTEM by OPI Group serve to increase the quality of the alloy which will then be treated in the aquaregia refining system through dissolution with nitric acid. The systems are built with steel/titanium reactors and have the possibility of having a ZERO EMISSIONS system thanks to our installed gasometer.

All systems are modular, the customer could choose between different reactor sizes in the same machine.

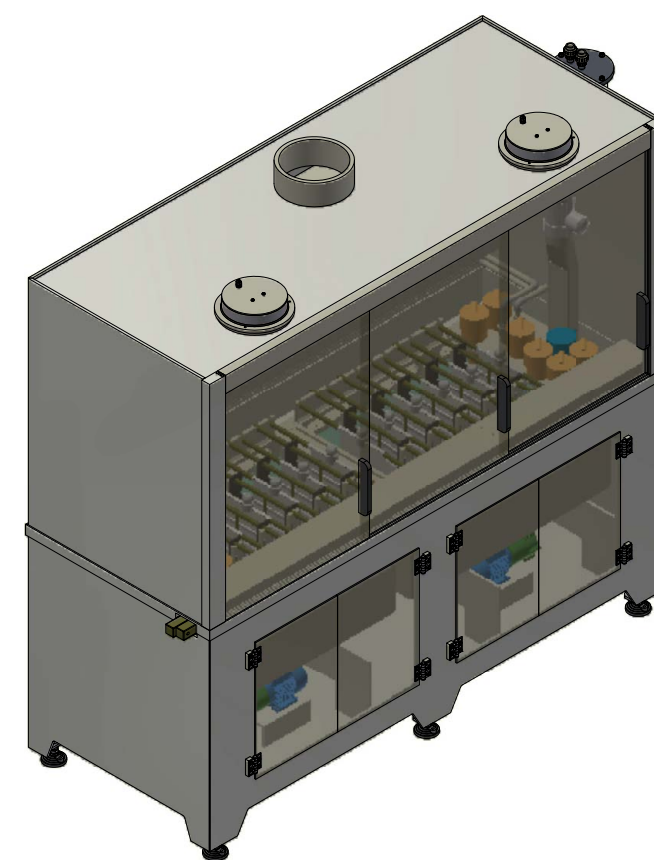


MODEL	DR30	DR100	DR250	DR500
CAPACITY lt	30	100	250	500
POWER kW	0,55	1,5	1,5	2,5
HEATING POWER kW	3,00	4,50	6,00	12,00
OVERALL DIMENSIONS mm	2000X1000XH2000	2500x1500xH2500	2500x1500xH2500	5000x2000xH2500

The dimensions are to be considered INDICATIVE and without stairs and/or walkways.

GOLD ELECTROLYSIS

The precious metals treatment and recovery system by OPI GROUP also includes the Gold Electrolysis process that allows obtaining a fineness of 999.9/1000 Au. Like all our systems, even these ones are sized according to the customer's needs. The produced smoke is conveyed and neutralized in special smoke reduction towers, appropriately sized. The dimensioning and design of the system, in term of both quantities to be processed and positioning, will be decided together with the customer.



MODEL	GE5	GE10	GE25	GE50
CAPACITY Kg/24h	5	10	25	50
POWER kW	0,55	1,5	1,5	2,5
HEATING POWER kW	3,00	4,50	6,00	12,00
OVERALL DIMENSIONS mm	2000X1000XH2000	2500x1500xH2500	2500x1500xH2500	5000x2000xH2500

The dimensions are to be considered INDICATIVE and without stairs and/or walkways.

GOLD

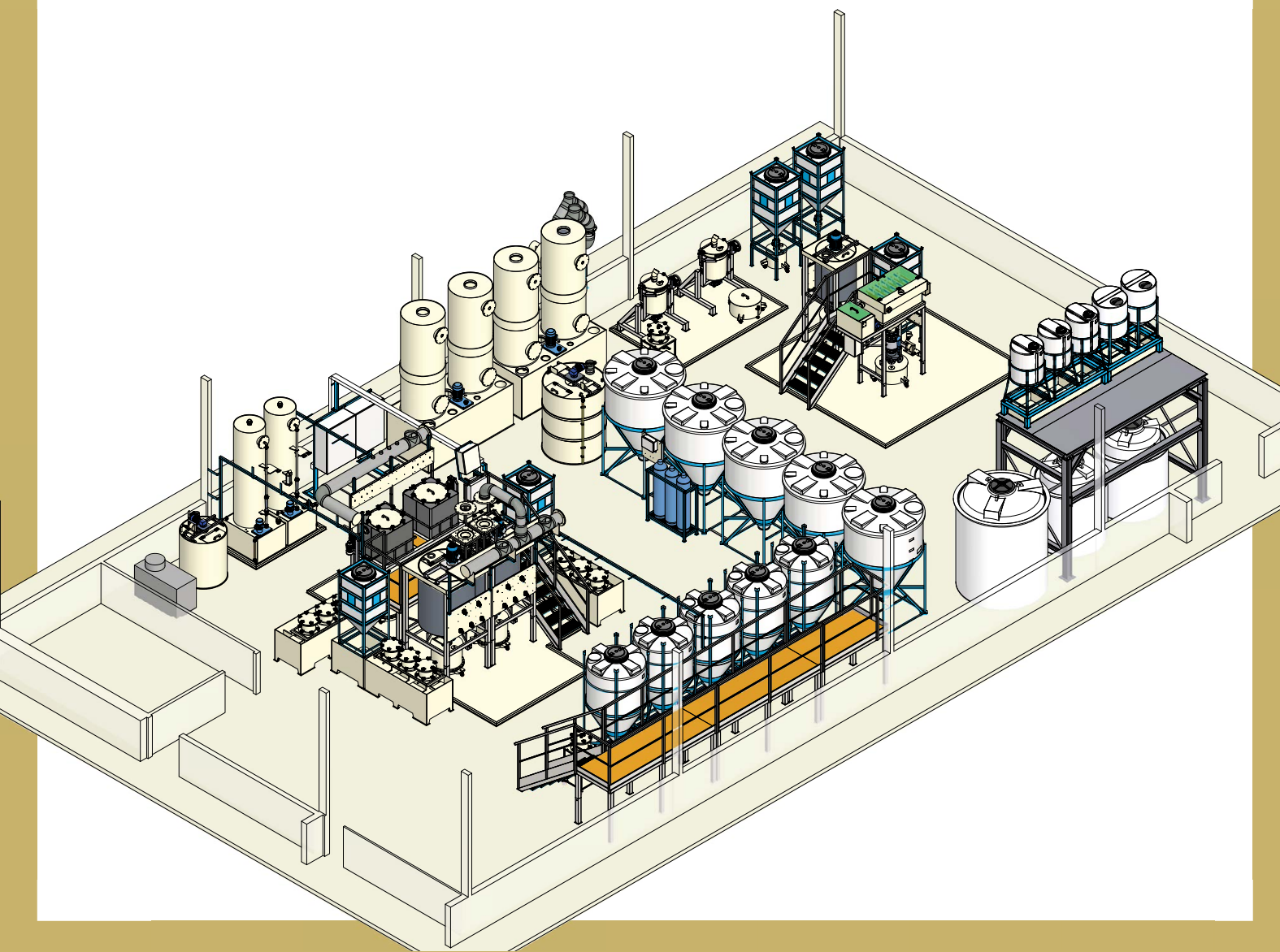
The refining plants by OPI GROUP are designed and manufactured according to the customer's needs and in compliance with anti-pollution regulations.

Acquaregia Gold refining system consists of one or more reactors made of PP, PVDF plastic material or TITANIUM, within which there is a rotating barrel built in the same durable materials; that allows a better dissolution of the alloy also with a high percentage of silver inside.

Therefore, they are not static installations and allow high performance and a greater effectiveness and efficiency in the dissolution process.

Having a hot processing cycle requires lesser time than a cold processing cycle; combining it with a mobile system allows performing several dissolutions during the day. The refining plants by OPI GROUP allow working 24 hours a day. The gold refining plant is equipped with: a frame made of AISI304/316 stainless steel, suction points, stair and walking surface with anti-slip resin flooring and Buchner filters. The system also includes an electric panel to control the machine actions and the process during the operation. Smoke neutralization is implemented with fumes reduction scrubber sized according to customer requirements.

The dimensioning and design of the system, in terms of both quantities to be processed and positioning, will be decided together with the customer.



OPI GROUP
IKOI REFINING SYSTEMS DIVISION



OPI GROUP

IKOI REFINING SYSTEMS DIVISION

TRADITION AND TECHNOLOGY

Our expertise, our consolidated experience and the specialized human resources that make up our team allow us to guarantee high quality products and to operate with maximum flexibility



Via Europa, 45/H - 36033 Isola Vicentina (VI) - IT
+390444557454 | info@opigroup.it
IT 04271770242